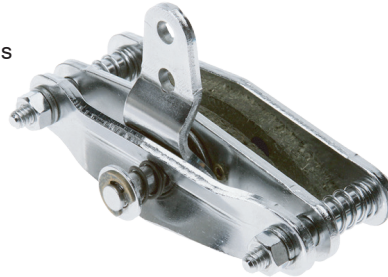


310M



FEATURES

- // Capable of 400 Lbs. of clamp force
- // Economical design ideal for low torque applications
- // Zinc finish resists rust and corrosion
- // Designed for either fixed or floating mount
- // Choice of CW and CCW lever actuation

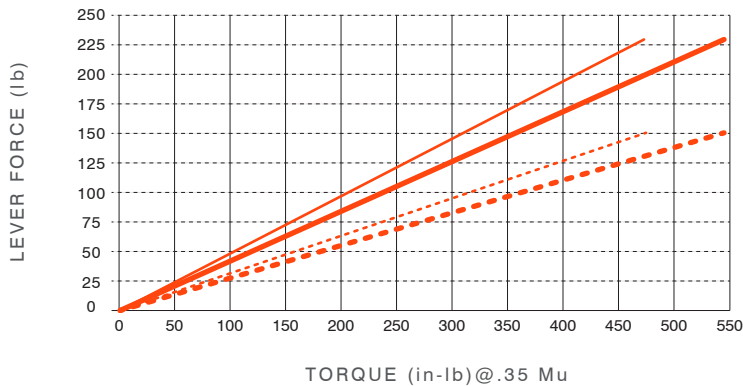
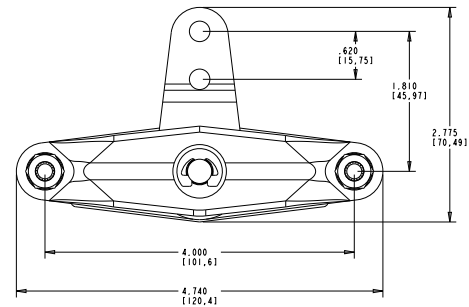


SPECIFICATIONS

WEIGHT	1 Lbs.
ROTOR DIAMETER	4.5" - 5"
ROTOR THICKNESS	.156" - .188"
LINING TYPE	Non-Asbestos Organic
TOTAL LINING AREA	4.875 Sq. In.
USABLE LINING THICKNESS PER PAD	.100"

Specifications are guidelines only and subject to change. Consult Hayes Performance Systems for specific model, part number, and assembly drawings - contact@hbpsi.com.

REFERENCE DIMENSIONS



- Dia = 4.5 in, Lever length = 1.19 in
- Dia = 5 in, Lever length = 1.19 in
- - - Dia = 4.5 in, Lever length = 1.81 in
- - - Dia = 5 in, Lever length = 1.81 in

